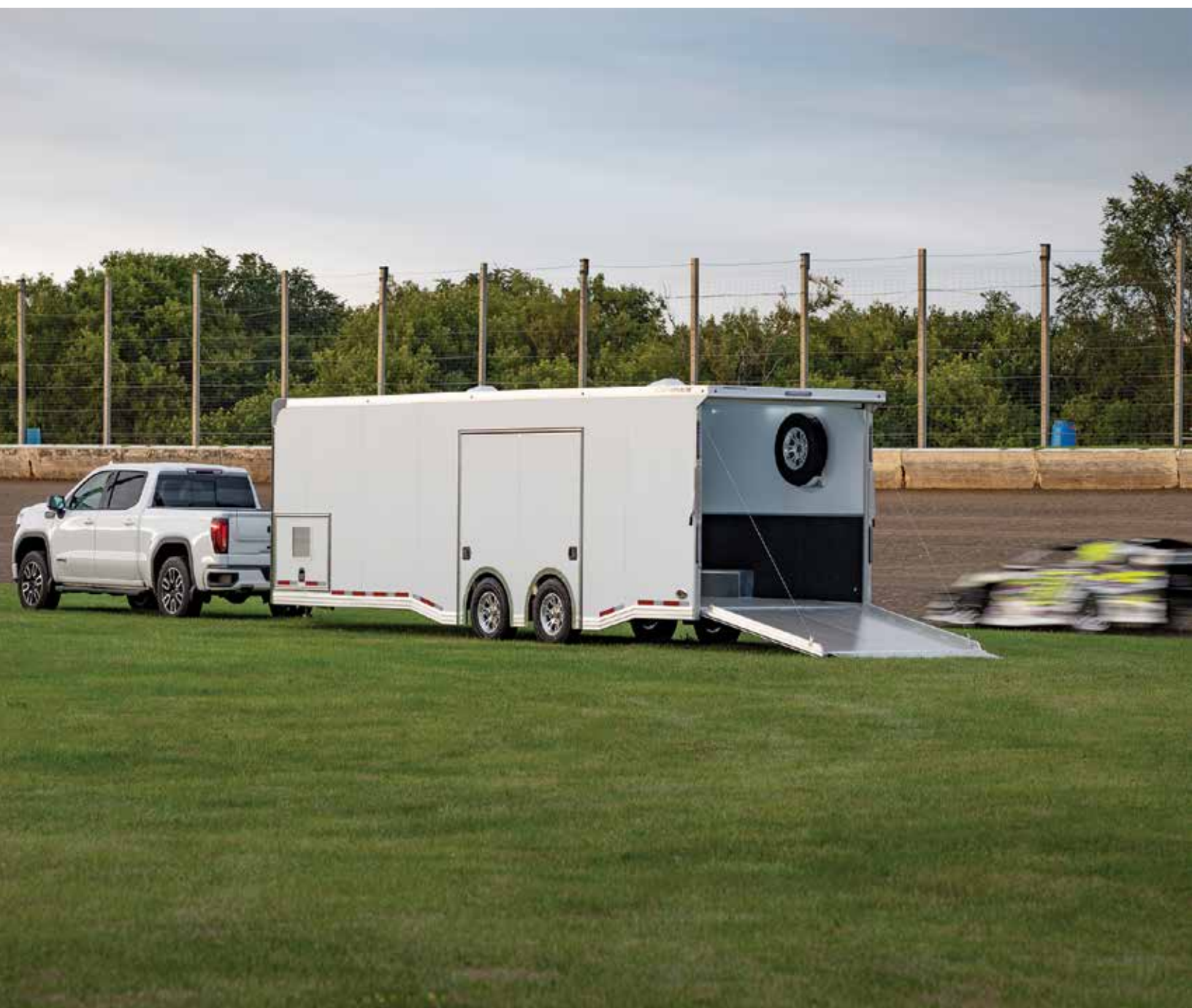


CAR TRAILERS



WHY CHOOSE FEATHERLITE TRAILERS?

GET YOUR CAR TO THE SHOW, THE RACE OR ANY BIG EVENT IN THE BEST—an all-aluminum Featherlite car trailer. Easy towing, durable, feature-rich Featherlites are the first choice of champions and auto enthusiasts everywhere.



Heavy-duty crossmembers. Heavy-duty 4" I-Beams on 12" centers give your trailer added strength and adds to the uni-body design. (on most models)

Aerodynamics. Featherlite v-noses are designed to be more wind resistant and easier to pull. They are also great looking!

D ring tie downs. Featherlite's D ring tie downs are handy to use to tie down cargo.

Aluminum floor. Durability on the outside is also found in the inside with Featherlite's standard aluminum floor. (on most models)

Wiring harness. All wires are bundled in a protective jacket, known as the Featherlite wiring harness to protect against wear and tear.

Flex Foot ramps are standard on open car haulers. A pivoted triangle at the end of the ramps conforms to the ground to make loading and unloading easier, especially on uneven surfaces.

All-aluminum construction. Customers report that Featherlite's all-aluminum trailers give them more payload capacity, smoother travel, fuel savings with the lightweight construction and a higher resale value.



Heavy-duty crossmembers



D ring tie downs



Wiring harness



Flex Foot ramps



All-aluminum construction

GOOSENECK CAR TRAILERS

Featherlite gooseneck car trailers are legendary for stability, versatility and convenience. Featherlite goosenecks provide the option for a longer trailer with additional storage space in the gooseneck and throughout the trailer. The design of an enclosed gooseneck allows for optional custom workshops, living quarters, cabinetry and internal lifts.



Model 4941

Hitch Type	Gooseneck
Enclosed/Open	Enclosed
Length (on the floor)	20', 22', 24', 26', 28', 30', 32', 34', 36', 38', 40' and 45'
Width	8' 6"
Wall to Wall Width	99" (92 3/8" rear frame)
Fender to Fender Width	81"; 79" (45 ft. model)
Inside Height	7' 0"
Loading Height	18"
Axles	20' through 34' = Two 7000# rubber torsion axles w/ electric brakes; 36' through 40' = Three 7000# rubber torsion axles w/ electric brakes; 45' = Three 8000# rubber torsion axles w/ electric brakes; E-Z Lube axles standard.
Tie Downs	Stainless steel swivel "D" ring tie downs (Qty: 4)
Floor	Smooth extruded aluminum floor
Side Door	42" heavy duty 2" double sealed camper door on curbside
Ramp	Full height and width rear ramp with cable assist & pressure latches; beaver tail
Colored Side Sheets	White sheets standard; Black, red, charcoal, silver, blue, brandywine, orange, yellow & green optional
Warranty	10-year limited structural*; 3-year hitch-to-bumper warranty; Transferable warranty** available on qualified trailers



Model 4941 includes a smooth extruded aluminum floor, rear ramp with cable assist and a heavy-duty double sealed side door. Choose from many options, including cabinets, workbenches, colored side sheets, expanded height and more!

Note: All dimensions are approximate. Some trailers may be shown with options.

WANT MORE INFORMATION? GO TO WWW.FTHR.COM

GOOSENECK CAR TRAILERS



The gooseneck version of Model 3110, the 3112 comes in lengths ranging from 20' to 30'. Features include two 7' ramps that can be stored under the trailer, removable fenders with stainless steel fender latches and stainless steel swivel D-rings.

Model 3112

Hitch Type	Gooseneck
Enclosed/Open	Open
Length (on the floor)	20', 24', 26' and 30'
Width	8' 6"
Fender to Fender Width	79"
Loading Height	22.5" to 24.5"
Axles	20' = Two 5200# rubber torsion axles with electric brakes; 24' and 26' = Two 6000# rubber torsion axles with electric brakes; 30' = Three 5200# rubber torsion axles with electric brakes; E-Z Lube axles standard.
Tie Downs	Stainless steel swivel "D" ring tie downs (Qty: 4)
Floor	Skid resistant extruded aluminum floor
Ramp	Two 7" "Flex Foot" ramps with storage underneath trailer
Warranty	10-year limited structural*; 3-year hitch-to-bumper warranty; Transferable warranty** available on qualified trailer

Model 3150

Hitch Type	Gooseneck
Enclosed/Open	Open
Length (on the floor)	50' and 53'
Width	8' 6"
Wall to Wall Width	NA
Fender to Fender Width	NA
Inside Height	NA
Loading Height	NA
Axles	Three 7000# axles with electric brakes; E-Z Lube axles standard.
Tie Downs	Stainless steel swivel "D" ring tie downs (Qty: 16)
Floor	Skid resistant extruded aluminum floor
Side Door	NA
Ramp	Two 9' long "Flex Foot" ramps
Colored Side Sheets	NA
Warranty	1-year limited structural



Model 3150 wedge car trailer can transport up to 3 vehicles and is ideal for use by trailer and car dealerships and other commercial haulers.



Model 1641 gives you a versatile, value priced hauling option for not only your cars but also ATVs, motorcycles, household items and much more! The trailer features a convenient rear ramp with cable assist and a durable 3/4" plywood floor.

Model 1641

Hitch Type	Gooseneck
Enclosed/Open	Enclosed
Length (on the floor)	16', 18', 20', 24' and 28'
Width	7' 0" and 8' 6"
Wall to Wall Width	8'6" wide = 99" (rear frame = 92 3/8"); 7" wide = 82" (rear frame = 75 5/8")
Fender to Fender Width	81"
Inside Height	6' 6"
Loading Height	20"
Axles	Tandem 3500# rubber torsion axles (16' & 18'); Tandem 4800# rubber torsion axles (20'); Tandem 5200# rubber torsion axles (24' & 28'); E-Z Lube axles standard; Can upgrade to 6.0K axles maximum.
Tie Downs	Optional
Floor	3/4" plywood
Side Door	36" x 68" square cornered camper door with deadbolt and screen
Ramp	Full height and width rear ramp with cable assist, pressure latches, plywood and vinyl hinge covers
Colored Side Sheets	White sheets standard; Black, red, charcoal, silver, blue, brandywine, orange, yellow & green optional
Warranty	10-year limited structural*; 1-year hitch-to-bumper warranty; Transferable warranty** available on qualified trailers

BUMPER PULL CAR TRAILERS

Great looking Featherlite bumper pulls are affordable and compact and can be hauled by a wide selection of vehicles including SUVs and motorhomes. Custom workshops, living quarters and cabinetry are available as options in Featherlite's enclosed models.



Model 4926 features a smooth extruded aluminum floor, gravel guard and a rear ramp with cable assist. Customization options include cabinets for tools and spare parts, front ramp and dual or tri-color side sheets among others.

Model 4926

Hitch Type	Bumper pull
Enclosed/Open	Enclosed
Length	16', 18', 20', 22', 24', 26', 28', 30' & 32'
Width	8' 6"
Wall to Wall Width	99" (92 3/8" rear frame)
Fender to Fender Width	81"
Inside Height	6' 6"
Loading Height	18"
Axles	2 rubber torsion axles with electric brakes; 16', 18' & 20' = 3500#; 22' & 24' = 4800#; 26' & 28' = 5200#; 30' & 32' = 7000#; E-Z Lube axles standard.
Tie Downs	Stainless steel swivel "D" ring tie downs (Qty: 4)
Floor	Smooth extruded aluminum floor
Side Door	36" deluxe camper door with deadbolt & screen
Ramp	Full height and width rear ramp with cable assist & pressure latches; beaver tail; Available with 6' nose option and front ramp (great for snowmobiles)
Colored Side Sheets	White sheets standard; Black, red, charcoal, silver, blue, brandywine, orange, yellow & green optional
Warranty	10-year limited structural*; 3-year hitch-to-bumper warranty; Transferable warranty** available on qualified trailers

Note: All dimensions are approximate. Some trailers may be shown with options.

WANT MORE INFORMATION? GO TO WWW.FTHR.COM

BUMPER PULL CAR TRAILERS

Model 1611

Hitch Type	Bumper pull
Enclosed/Open	Enclosed
Length	12', 14', 16', 18', 20' & 24'
Width	7' 0" and 8' 6"
Wall to Wall Width	99" (8'6" wide trailer) or 82 3/8" (7" wide trailer)
Fender to Fender Width	81"
Inside Height	6' 6"
Loading Height	20"
Axles	Tandem 3500# rubber torsion axles (12'-20'); Tandem 4800# rubber torsion axles (24'); E-Z Lube axles standard.
Tie Downs	Optional
Floor	3/4" plywood
Side Door	36" x 68" square cornered camper door with deadbolt and screen
Ramp	Full height and width rear ramp with cable assist, pressure latches, plywood and vinyl hinge covers
Colored Side Sheets	White sheets standard; Black, red, charcoal, silver, blue, brandywine, orange, yellow & green optional
Warranty	10-year limited structural*; 1-year hitch-to-bumper warranty; Transferable warranty** available on qualified trailers



Model 1611 puts functionality over frills. It features 3/4" plywood floor, and a rear ramp with cable assist makes loading and unloading a snap.



Model 4410 features a flat nose, spread axle design and enhanced standard features, including aluminum wheels, interior strip lights, one load light and more. Cabinets optional.

Model 4410

Hitch Type	Bumper pull
Enclosed/Open	Enclosed
Length	20', 24' or 28'
Width	8' 6"
Wall to Wall Width	99" (rear opening width=94 1/4")
Fender to Fender Width	82"
Inside Height	7' 0"
Loading Height	20"
Axles	2 rubber torsion axles with electric brakes; 20' = 3500#; 24' & 28' = 6000#
Tie Downs	Stainless steel swivel "D" ring tie downs (Qty: 4)
Floor	Smooth extruded aluminum floor
Side Door	42" double seal camper door on curbside
Ramp	Full height & width rear ramp with cable assist, pressure latches, treadplate & vinyl hinge cover
Colored Side Sheets	White sheets standard; Black, charcoal & silver optional
Warranty	10-year limited structural*; 3-year hitch-to-bumper warranty; Transferable warranty** available on qualified trailers

Model 3110

Hitch Type	Bumper pull
Enclosed/Open	Open
Length	14', 17' 6", 20', 22' & 24'
Width	14' & 17' 6" = 8' or 8' 6"; 20', 22' & 24' = 8' 6"
Wall to Wall Width	NA
Fender to Fender Width	8' 0" = 73 1/2"; 8' 6" = 79"
Loading Height	19"
Axles	2 rubber torsion axles with electric brakes; 14' & 17' 6" = 3500#; 20' = 4800#; 22' = 5200#; 24' = 6000#; E-Z Lube axles standard.
Tie Downs	Stainless steel swivel "D" ring tie downs (Qty: 4)
Floor	Skid resistant extruded aluminum floor
Ramp	Two "Flex Foot" ramps with storage underneath trailer (6' long on 14' & 17' 6" and 7' long on 20', 22' & 24')
Warranty	10-year limited structural*; 3-year hitch-to-bumper warranty; Transferable warranty** available on qualified trailers



Model 3110 open car hauler features stainless steel swivel D rings, removable fenders and ramps that store underneath the trailer. Options include skid loader edition, air dam and power lift package.



Model 3182 features an increased fender-to-fender width giving you a wider platform for loading and hauling your vehicles. In addition, it includes removable fenders, standard aluminum wheels and two easy-to load ramps with in-chassis storage.

Model 3182

Hitch Type	Bumper pull
Enclosed/Open	Open
Length	16', 18', 20' & 22'
Width	8' 6"
Fender to Fender Width	83 1/2"
Loading Height	19"
Axles	Tandem 3500# rubber torsion axles with electric brakes.
Tie Downs	Surface mounted airline tie down system
Floor	Skid resistant extruded aluminum floor
Ramp	Two multi-location aluminum ramps with in-chassis storage (6' long on 16' & 18' and 7' long on 20' and 22')
Warranty	10-year limited structural*; 1-year hitch-to-bumper warranty; Transferable warranty** available on qualified trailers

Note: All dimensions are approximate. Some trailers may be shown with options.

WANT MORE INFORMATION? GO TO WWW.FTHR.COM

FEATURES

Giving you reliable transportation and safety for your car or other cargo is our focus. That's why Featherlite car haulers are equipped with innovative, safe and convenient features that many other manufacturers offer as options.

STANDARD FEATURES:

- Skid plate (enclosed)
- Thickest frame extrusions (van rail, top rail, rear frame, side posts)
- 4" side post hat channel on 16" centers
- Unmatched warranty
- Side sheets fastened with buck rivets (hold longer than screws or pop rivets) on most models
- Cable assist rear ramp on enclosed models
- E-Z Lube axles
- Flex Foot ramps on open models
- Heavy duty tongue on all bumper pulls
- Piano hinged ramp on enclosed models
- Swivel D ring tie downs
- 81" between fender wells on most enclosed models
- Extruded aluminum floor on most models
- Plus many more!

Features may vary depending on trailer model.
Some options shown are not available on all models.



Bumper pull aerodyne nose



Gooseneck tapered nose



All aluminum construction

OPTIONS

If you can imagine it, chances are we can build it for you. Our goal is to provide you with the best car trailer for your particular hauling situation. Pick from these and many more options to customize your car hauler to be the PerfectFit for you.

- 110 volt lighting/electrical
- 2" double seal doors
- 6' ramp extension
- Additional height
- Additional tie downs
- Air dam
- Airliner track or A-track
- Aluminum wheels
- Bi-folding ramp or full-width fold up ramp
- Cabinets & workbenches
- Exterior colors
- Generator
- Internal lifts
- Kingpin hitch
- LED dome lights
- Lined and insulated
- Nudo® flooring
- Power Lift Package
- Premium escape door
- Quiet Slide ramps
- Raised deck with beavertail
- Skid Loader Package
- Vending doors
- Viewing platforms



Premium escape door on 4410



Nudo® flooring



Wide array of cabinet options



White lined & insulated interior

Note: All dimensions are approximate. Some trailers may be shown with options.

WANT MORE INFORMATION? GO TO WWW.FTHR.COM

COACH & STACKER TRAILERS



Featherlite coach trailers are designed to meet the unique transportation needs of luxury coach owners. Featuring an electric driven internal lift system, Featherlite coach trailers can easily accommodate a car or recreational vehicles such as motorcycles and ATVs. Ask your dealer about our Model 4953 or 4954 coach trailers.

Featherlite's Model 4926 can be customized as a stacker trailer with additional height and a lift for hauling multiple cars. Tie downs, cabinets, lighting, colored side sheets, wireless backup camera, vending style side door and much more can complete your stacker trailer!



For more information on the Featherlite Full Line of Trailers, visit www.fthr.com



Model 1610 Rec/utility trailer to haul all types of cargo



Model 1648 bumper pull snowmobile hauler



Mobile Display Trailer Take products to your customers



Mobile Kitchen Trailer Go on site with a mobile marketing trailer



Model 1693 Versatile open rec trailer



Vending Trailer Food or merchandise sales

Featherlite supports racing Featherlite is proud to sponsor these organizations and events (among many others)



Contact a Featherlite Dealer for Details. Your area dealer is:

Ask your Dealer about loans & leases on new trailers!

- :: Competitive Rates
- :: Convenient, Flexible Payment Options
- :: Fixed Rates



Want more information?
Snap this with your smart phone to visit Featherlite's website.

phone **563.547.6000**
web www.fthr.com

toll free **800.800.1230**
email besttrailers@fthr.com

fax **563.547.6100**
address **Hwy. 63 & 9, Cresco, IA 52136**



Safe. Secure. Smart.

*See website or dealer for details on warranty. **Transferable warranty is available only on a trailer with remaining warranty that is traded in for a new Featherlite trailer at an authorized Featherlite dealer and resold by the authorized Featherlite dealer. See dealer for details. All dimensions shown in this brochure are approximate and may vary. Featherlite, Inc. reserves the right to change or alter these specifications without notice. Some trailers shown with optional equipment. ©10/2020 Featherlite, Inc. Printed in the United States.