



Safe. Secure. Smart.

## THE ORIGINAL ALUMINUM FEATHERLITE STOCK TRAILER



[FTHR.COM](http://FTHR.COM)



All-aluminum Featherlite stock trailers are a superior value and move you ahead of the curve! They're super tough, yet give you a lighter, smoother tow that can save fuel. They can outlast a half-dozen pickups — and no telling how many steel trailers. Featherlites are priced right and have the best resale available. From bumper pulls to double-deck semi-trailers, Featherlite builds a stock trailer for any operation.

**NOTE:** The specs listed in this brochure for each model are considered 'base' specs. Many more choices beyond those listed are available. See your Featherlite dealer.

# FARMERS:

## The facts are clear!



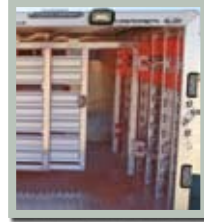
Uni-body construction for strength



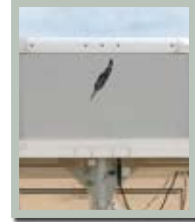
Wiring harness keeps wiring secure



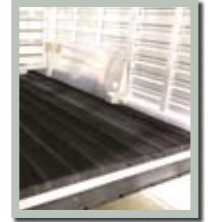
Heavy-duty crossmembers



Step Safe gates protect livestock



Rounded clearance lights look great



Rumber flooring is super durable

### QUALITY FEATURES

#### Aluminum Uni-Body Construction.

Featherlite livestock trailers are constructed with high quality, extruded 6061-t6 alloy-tempered aluminum, giving livestock haulers the best of both worlds – unmatched reliability with the classic Featherlite look. All components of the trailer from side posts to roof rails to roof bows to cross members are engineered into a uni-body design. The Featherlite uni-body design gives you a stronger, more durable trailer. With proper maintenance, your Featherlite trailer will give you years of reliable livestock hauling.

#### Arched Aluminum Roof.

Compared to many flat roofs, Featherlite's arched aluminum roof is stronger, functions to allow rain or snow to run off efficiently and is aesthetically favored by trailer owners. Featherlite's roof fabrication is unique to trailer manufacturing, utilizing the superior pierce and roll system (used by airplane manufacturers) in the construction of each trailer roof. Tough, durable stainless steel rivets are driven into the aluminum, but no hole completely pierces into the roof. Instead a secure crown forms up and around the bottom of the rivet, reducing the opportunity for water leakage.

#### Wiring Harness.

Many manufacturers wire their trailers with individual wires but at Featherlite, all wires are bundled in a protective jacket, known as the Featherlite wiring harness. The Featherlite wiring harness provides a water-tight

seal, protects against wire wear and tear and makes connecting wires easier.

#### 'Wave' Side Panels.

Sleek, undulating 'Wave' side panels are now standard on Featherlite stock trailers.

#### Heavy-Duty Crossmembers.

Featherlite stock trailers have a solid support system underneath for the heaviest loads. 4" crossmembers run every 12" under the trailer on most models.

#### Clearance Lights.

Clearance lights now feature a rounded, flush mounted design standard.

#### Rubber Torsion Axles.

Featherlite's rubber torsion axles provide an unbelievably easy pull and smooth ride. Each wheel is equipped with a separate brake to help you slow down and stop quickly. Featherlite trailers provide excellent control and the safest ride possible for both you and your animals.

**NOTE:** New rounded clearance lights not shown on selected photos.

### POPULAR OPTIONS

#### Step-Safe Gates.

Optional patent-pending "Step Safe" rear and center gates make loading and unloading dramatically easier, especially for those livestock unaccustomed to loading. Livestock don't have to step over the gate track, instead it slides with the door.

#### PerfectFit™ System.

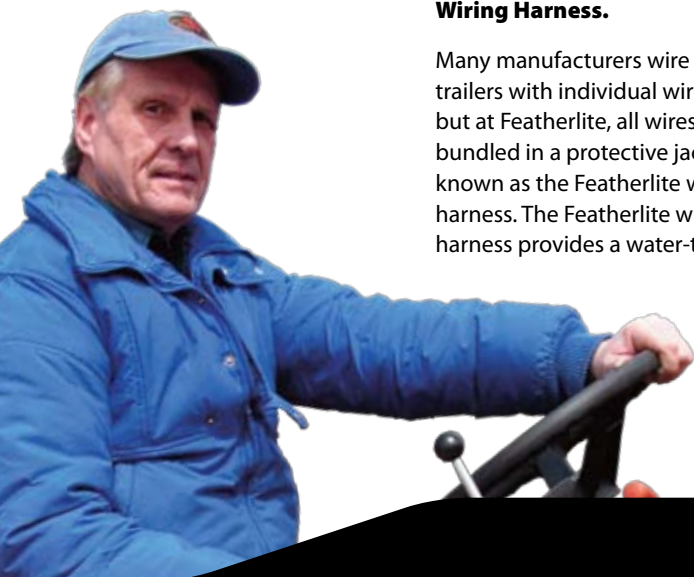
Easily customize your livestock trailer around your life and your livestock with the Featherlite PerfectFit System.

#### Rumber® Flooring.

New optional flooring from Rumber® serves as a cushioning surface for livestock, giving them firmer footing and minimizing the risk of injury and stress on joints. It's quieter for livestock when entering the trailer, will increase the value and life of the trailer due to its durability and 10 year warranty, and is UV and water resistant.

#### Featherlite Warranty.

Featherlite livestock trailers come with an extra measure of security - The Featherlite 8-year limited structural warranty\*. Plus, you get a higher resale value that comes from Featherlite's transferable warranty\*\*.



# goosenecks

Featherlite goosenecks are legendary for their unmatched stability, versatility and convenience. Featuring an arched, one-piece aluminum roof, strong extruded aluminum floor and heavy-duty crossmembers, each model has a unique combination of features that stockmen have told us work best for them.

01

## 8120, 8121, 8127 SPECIFICATIONS

- Aluminum body construction
- Extruded interlocking, skid resistant aluminum floor
- Tandem 7K axles on 16', 18', 20' & 24'
- Triple 7K axles on 32'
- Tandem 8K axles on 30'
- Triple 8K axles on 36'
- Silver modular wheels
- 2 $\frac{5}{16}$ " adjustable ball type coupler
- Sealed beam running lights and 4 stop/turn lights
- One dome light with switch
- Full opening center gate with slam latch with slider
- Full opening back endgate with slide-by on driver's side
- Full width drop partition hinged down
- Side escape door on curbside
- Full width rubber dock bumper across lower rear frame
- Break-away switch with heavy-duty battery and safety chains
- Heavy-duty rear endgate frame
- Full-length running boards on 7' and 7'6" wide trailers
- 4" heavy-duty I-beam crossmembers on 12" centers
- Extruded roof bows on 24" centers
- Spare tire carrier
- Heavy-duty C-channel subframe
- All LED lights
- Tapered nose

Footnote: 102" axles may not be legal on all types of roads

## 8120, 8121 & 8127 POPULAR OPTIONS

- Rubber  $\frac{3}{4}$ " on floor
- Roof vent
- Roll-up door in rear gate
- Plexiglass side panel
- Extra height
- "Western" rear gate
- Graphics packages
- Different air spacing options
- Hinged cover panels
- Double deck option
- Interior and exterior ramps
- Full width vent on drop wall

All dimensions are approximate. Some trailers may be shown with options.

Model Shown: Lazer

## Model 8127

Most popular livestock trailer available with numerous options

- Base 16', 18', 20', 24', 26', 28', 30', 32' & 36' lengths
- 6'6" tall
- Full swing rear gate with lockable slider
- Available with any quantity of center gates depending on length. Gates can be positioned to owner's preference.
- Curbside escape door
- Available with low profile option



Shown: 24' model



Shown with optional polished side panels, side graphics, painted roof-rail, black side sheets on nose, plexiglass, side ramp and more.



Shown with low profile option.

### Popular low profile options

- Optional 5' height shown
- Plexiglass airspaces
- Hinged or bolt-on cover panels
- Simulator rims
- Adjustable gates and much more!
- Low profile option available on any length trailer

02

## Model 8121

8' wide gooseneck available with up to three center gates depending on length

- Base 16', 18', 20', 24', 26', 28', 30', 32', & 36' lengths
- 6'6" tall
- Full swing rear gate with lockable slider
- Curbside escape door
- Tapered gooseneck



Custom graphics wraps are available on Featherlite stock trailers.

Shown with double deck option



Model 8121 options include Plexiglass, black sheets, graphics, side ramp, "Western" rear gate and more.

## Model 8120

7'6" wide gooseneck stock trailer available in many lengths with numerous options

- Base 16', 18', 20', 24', 26', 28', 30', 32', & 36' lengths
- 6'6" tall
- Full swing rear gate with lockable slider
- Curbside escape door
- Center gate with slam latch
- Running boards



Shown with many options including black painted panels and side ramp.



Shown with optional air spaces.

Shown: 30' with optional triple axles & Western rear gate pkg.



Stylish semi-trailer top rail design optional.

## Model 8117

"Lite-priced" gooseneck trailer with wood floor and center gate with slam latch

- Base 16', 20', 22' & 24' lengths
- 6'7" wide
- 3" crossmembers on 18" centers
- Full swing rear gate with lockable slider
- Curbside escape door

03



Shown: 24' model

## Lazer

Stock trailer with distinctive new design & construction

- Rounded air spaces
- Smooth, flush interior is easier to clean
- 20', 24' & 28' lengths
- 7' wide & 6'6" tall
- Full swing rear gate with lockable slider & full swing center gate with slam latch
- Running boards

Also available in bumper pull!



Shown: 24' with optional roll up door & Western rear gate pkg.

# livestock box

An alternative to a stock trailer, livestock truck boxes load easily in the bed of a pickup truck for hauling one or two small animals.

## Model 8191

Livestock box featuring all-aluminum construction.

- 3'6" wide and 41" tall
- Two lengths — 6' or 7'6"
- Full swing rear door



Shown: 7'6" long model with optional polished panels

# combo

## Model 8407

Bumper pull combo trailer 8407 with dressing room and 6'7" width

- Base lengths: 12', 16' & 20'
- 7' tall
- Straight wall or slant wall dressing room
- 2" treated wood floor, aluminum optional
- Center gates or slant dividers optional



Shown: 12' with silver sheets

Featherlite combo trailers are versatile options for hauling cattle, horses and other livestock. Featherlite's combo trailers offer livestock and horse owners a blend of versatility, structural integrity and great features.

## Model 8409

Bumper pull combo trailer with handy dressing room and aluminum floor

- Base lengths of 12', 16', 20' & 24'
- 7' or 8' wide & 7' tall
- Curbside escape door
- Full swing rear door with lockable slider



Shown: 20' 8409 low profile with ramp and other options.

Shown: 16' model



## Models 8413-8414-8415

Versatile combo trailers available in lengths of 16', 20', 24' and 28'

- 8413 = 7' wide; 8414 = 7'6" wide; 8415 = 8' wide
- 7' tall
- 4' straight wall or 3' short wall dressing room
- Curbside escape door
- White aluminum exterior sheets at front
- Full swing rear door with lockable slider



Shown: Model 8413 (24')



Shown: Model 8414 (20')



Shown: Model 8415 (24') with optional dual side sheets



Shown: Model 8415 with living quarters & other options

## Model 8417

"Lite-priced" gooseneck combo trailer with wood floor standard

- Lengths of 16', 20', 22' & 24'
- 6'7" wide & 7' tall
- Escape door
- Full swing rear gate with lockable slider



Shown: 16' with many options including blue side sheets, plexiglass and stainless steel front and corners.

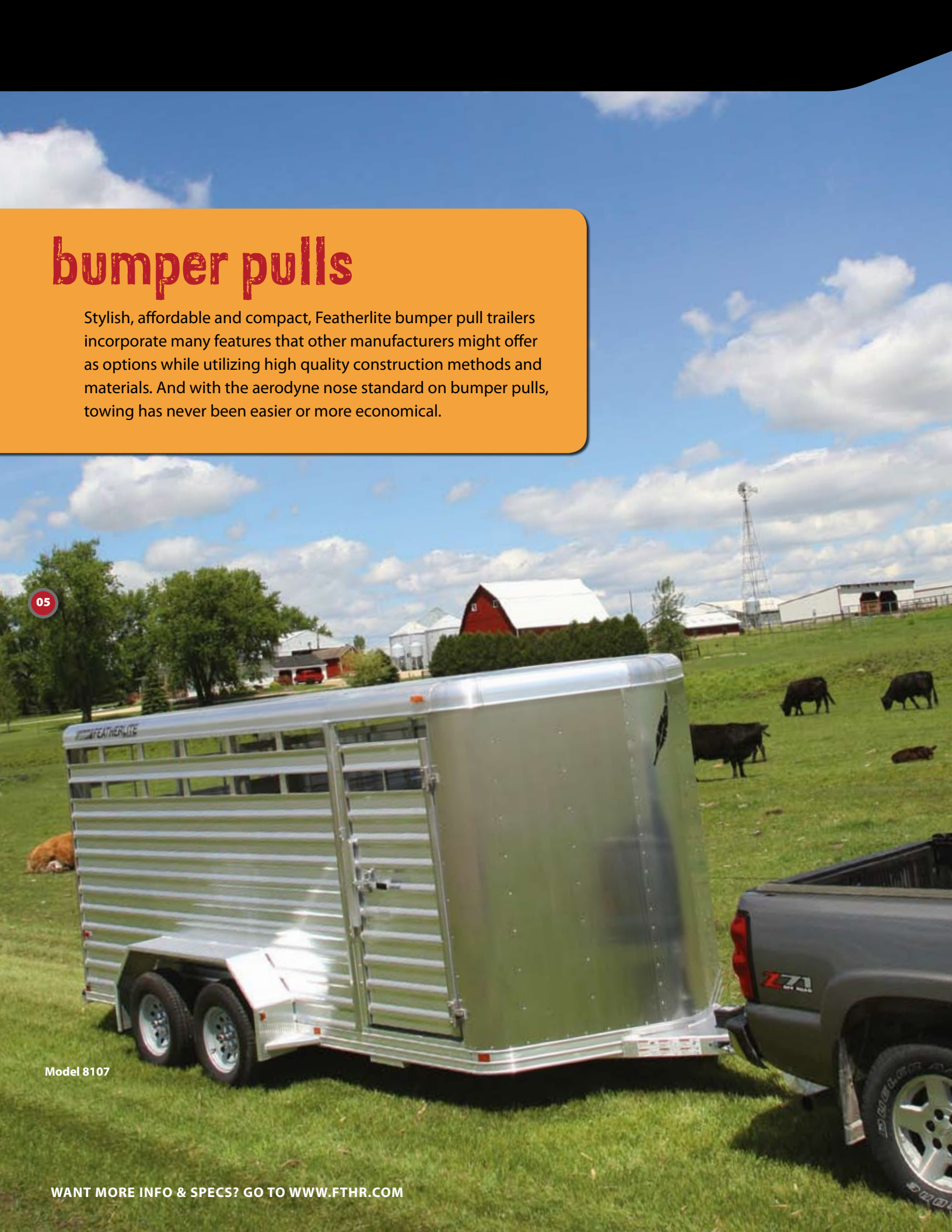
# bumper pulls

Stylish, affordable and compact, Featherlite bumper pull trailers incorporate many features that other manufacturers might offer as options while utilizing high quality construction methods and materials. And with the aerodyne nose standard on bumper pulls, towing has never been easier or more economical.

05

Model 8107

WANT MORE INFO & SPECS? GO TO [WWW.FTHR.COM](http://WWW.FTHR.COM)



## Model 8107

**Bumper pull livestock trailer available in standard or low-profile heights (5'3")**

- 2" treated wood floor (aluminum upgrade optional)
- Base 12', 16' and 20' lengths
- 6'7" wide — no inside fender wells
- 6'6" inside height is standard (7" optional)
- Brakes on all wheels
- Two top airs standard
- Full swing rear gate with slider
- Full swing center gate with slam latch



Shown: 16' low profile with options including brandy-wine side sheets, polished panels & more.



Shown: 16' low profile model with optional plexiglass, gravel guard, black sheets and more.



Shown: 16' model with optional front white sheets

## Model 8125

**Featherlite's Model 8125 is patterned after the very popular gooseneck 8127. It can be hauled by a wider selection of vehicles including some campers and SUVs.**

- Base 12', 16', 20' and 24' lengths
- 7' & 8' wide & 6'6" tall
- It features one heavy duty center gate with slider that is easy to use and safe for both owner and animal
- 12' has 3.5K axles
- 16' and 20' have 6K axles
- 24' has 7K axles
- A skid resistant durable extruded aluminum floor offers livestock a quieter ride and loading



Shown with low profile option and show package: Optional aluminum wheels, stripe package, hay rack, larger windows, tack room with 2" door, gravel guard, white painted roof rail

06

Shown: 16' with optional spare tire.

## Model 8192

**Built on a flatbed frame, the trailer features a removable enclosed livestock topper, giving you 2 trailers in one!**

- Lift rings on the roof allow for removal of the topper
- Versatile for all types of cargo
- 14' long & 8'6" wide
- Topper width is 6'5" with height of 5'5"
- Center gate
- Two 6' long ramps for use as car hauler
- Escape door



# semi

Enhance your livestock operation with a Featherlite semi trailer.

## Model 8261

Semi livestock trailer with winter enclosure kit



## Model 8270

Semi livestock trailer available in many lengths starting at 34' (shown).



All dimensions are approximate. Some trailers may be shown with options.

Featherlite gives you more...

# great features & options






Featherlite has incorporated many features and options into its livestock trailers important to you and your animals' safety.

- |   |   |  |
|---|---|--|
| <b>1</b> Stainless steel fasteners                          | <b>7</b> Pierce and roll roof rivet system                            | <b>13</b> Enclosed overhead wiring   |
| <b>2</b> Full length 1-piece aluminum roof                  | <b>8</b> Full swing rear door with slide-by gate that slides on nylon | <b>14</b> 5 bolt-on hinges on gates  |
| <b>3</b> Arched roof  | <b>9</b> 33" x 72" escape door  | <b>15</b> Inside height 6'6"   |
| <b>4</b> Center partition gate with custom built slam latch | <b>10</b> 8' gooseneck assembly                                       | <b>16</b> LED lights standard & (4) stop/turn lights standard                |
| <b>5</b> Heavy-duty roof rail with 5" radius corners        | <b>11</b> Roof bows on 24" centers                                    | <b>17</b> Full length running boards with step up fenders on 7' & 7'6" width |
| <b>6</b> Heavy-duty extruded tongue and groove side panels  | <b>12</b> Heavy-duty aluminum side posts on 18" centers               |  |



\* Some features and options not available on certain trailer models.

- |   |   |  |
|---|---|--|
| <b>18</b> DOT reflectors  | <b>23</b> Aluminum flooring with 4" cross members on 12" centers  | <b>27</b> Natural aluminum on gooseneck sides & nose   |
| <b>19</b> 2 5/16" adjustable coupler                            | <b>24</b> Gooseneck drop partition in nose  | <b>28</b> st235/85 r16 load range E tires with 8 hole 16" rims on rubber torsion axles w/4 stainless steel center caps & chrome lug nuts |
| <b>20</b> Heavy-duty drop leg w/high speed crank & landing gear | <b>25</b> Rubber dock bumper and skid plate   | <b>29</b> Safety chains w/breakaway switch + battery   |
| <b>21</b> 18" floor height                                      | <b>26</b> 7000# rubber torsion w/heavy-duty C-channel subframe axle 2" x 12" brakes on all 4 wheels - 20' trailer |  |
| <b>22</b> Extruded aluminum fenders                             |   |  |

- |  |   |
|--|---|
| <b>A</b> Lockable slider                                 |    |
| <b>B</b> Safety keeper on pressure latches and rear door |    |
| <b>C</b> Exclusive patented slam latch                   |   |
| <b>D</b> Drop down gate latch                            |  |
| <b>E</b> Spring-loaded gate holdback                     |  |



## MANY MORE OPTIONS AVAILABLE

- 1** Standard tapered nose **2** Aerodynamic V-nose **3** Full width nose shown with optional access door  
**4** Standard rear door **5** Optional roll up door **6** Double rear doors



All Featherlite trailers are manufactured in compliance with the National Association of Trailer Manufacturers (NATM).

## advanced manufacturing

Featherlite blends a highly skilled workforce with the latest in high technology robotics, computer aided design and computerized machining centers to build your livestock trailers with extraordinary precision and quality. Continuing advances in technology are one reason why the Featherlite brand maintains its leadership position in the industry and consistently high levels of customer satisfaction.



“

**I love my Featherlite!** It is bigger than my previous trailer but much lighter and easier for me to hitch, load and haul to my cattle shows by myself. Before Featherlite my fuel mileage dropped greatly when I hauled even a few head of cattle. Now it is about the same whether hauling or not. This trailer has been a tremendous time and money saver for me.

MODEL 8127 OWNER

”

FOR EVERY HAULING NEED

## Featherlite Trailers



### Model 9409 Bumper Pull Aluminum Horse Trailer

- 2, 3 or 4-horse
- Various dressing room sizes
- Folding rear tack
- Shown w/ optional panels



### Model 1610 Utility/Recreation Trailer

- Versatile — for home, recreation, business
- Featherlite Advantage flooring



### Model 1585 Aluminum Flatbed Trailer

- Durable Featherlite quality
- Up to 24,000 GVW available
- 8'6" bed width



### Model 3110 Car Hauler with Power Lift Pkg.

- Power/electric tilt bed — no need for ramps
- Easily load cars & farm equipment



^ Snap this with your smart phone and see the walkaround tour of Featherlite Model 8127



### Ask your Dealer about loans & leases on new trailers!

- Competitive Rates
- Convenient, Flexible Payment Options
- Fixed Rates

Contact a Featherlite Dealer for Details. Your area dealer is:

phone **563.547.6000**

web **www.fthr.com**

toll free **800.800.1230**

email **besttrailers@fthr.com**

fax **563.547.6100**

address **Hwy. 63 & 9, Cresco, IA 52136**

All dimensions shown in this brochure are approximate and may vary. Featherlite, Inc. reserves the right to change or alter these specifications without notice. Some trailers shown with optional equipment. ©04/2011 Featherlite, Inc. Printed in the United States.

\* 1-year bumper to bumper. Some restrictions apply. \*\*Available only on trailer with remaining warranty traded in for a new Featherlite trailer at an authorized Featherlite dealer and resold by the authorized Featherlite dealer. See dealer for details.



Safe. Secure. Smart.